



SPG302

LED SHELL LIGHT User's Manual

Thank you for choosing our product, please carefully read this manual and operate it obey the specification in order to make sure you can correct and safety installing、operating and maintaining it; We will not take any responsibility for the damage and body injury which caused by the abnormal operation.

NIGHTSUN PRO LIGHTING EQUIPMENT CO.,LTD.
Nightsun Industrial park, Guang Long Road,
Zhong Luo Tan Town, BaiYun Area, GuangZhou City, China
TEL: + 86-20- 87404000(over seas) 87408818 / 8838 / 8588 / 8788
FAX: + 86-20-87407453 HTTP: www.nightsun.net
E-MAIL: overseas@nightsun.com.cn



Maintenance

●Cleaning and Using Frequency of Product

Please confirm that the power of the light is disconnected before dismantling or maintenance. It is very important to keep the light be cleaning .not only can keep the light with maximum brightness output but also can prolong their work life. please use the high quality and professional glass detergent and soft cloth to clear up the equipment ,it's not allowed to use the alcohol and chemical solvent absolutely.

The inner part of the light should be cleaned by vacuum cleaner at least once each year. When the light doesn't work, please check if the fuse is burnt out or not? If it is, the same fuse should be replaced, find out the faulty and restart the light. But please note the repair must be handled by professional.

●Complain

- 1.The salesman will check the details of complained problem, included the item no、 delivered quantity、 delivery time、 faulty and pictures, and the requirement of customer
- 2.QC and Technology department will analysis the complained problem, and give a final solution to customer

Faulty Disposal

Familiar Faulty	Disposal
Light doesn't work	1.Check if the fuse burnt out or not 2.Check if the power connected well or not 3.Check if the +12V or +5V of circuit board is short circuited or not
Light is working, but not controllable by controller	1.Check if the DMX address code is correctly set? 2.Check the Check the signal communication of the wires.
Some LED lamps don't work	1.Check if LED lamp damaged or not

the plug when light is stop working or cleaning, never pull out it roughly or handle the wire directly.

11. Please do not look the lamps directly , or it would hurt your eyes.

Notice: Please make sure it's power off before any installation, repair and clean!

Introduction

●Product Features:

1. This product with smart designed, LED with multi-effect, dynamic change, energy-saving, long life lamp, high-performance security, can be normal work in wide voltage range, very suitable for small private rooms and small or medium entertainment places.
2. Changes in the colorful, dynamic beam effects.

●Technical Features:

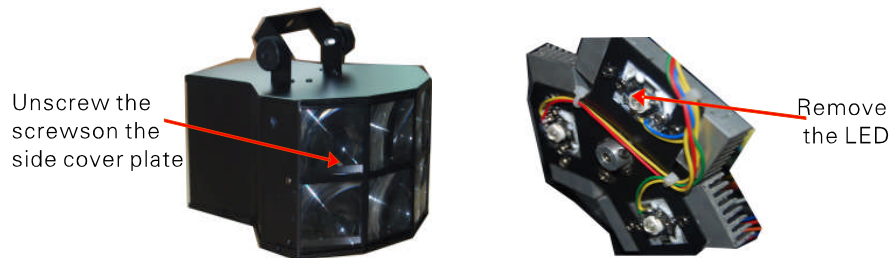
1. Control Channel: 3 DMX channels.
2. Operating Mode: DMX control mode、 Master/Slave mode、 Sound activate mode、 Auto mode

Technology Parameter

- Voltage: AC100V-240V 50/60Hz
- Power: 12W
- Outline Size: 28.2× 27.4× 19.8 cm
Packing Size: 36× 35× 28 cm
- N/W: 2.87kg
G/W: 3kg
- LED Lamp: 3×3W high brightness RGB LED
- Gobo : Flash 、 Circle rotation

Installation

●Installation/replacement of LED lamp



First, unscrew the screws on the side cover, then remove it, and unscrew the screws which on the LED board, then remove the LED board. If there are LED lamps were damaged, you need to use the thermostatic electric iron to remove it. Installation is in the opposite way.

Warning

- 1: The light power supply must be disconnected during the replacement of the LED lamp
 - 2: The anti-static and thermostatic electric iron must be used, and wear the anti-static rings before repair the light
- Connection of Power and Wire

The exclusive plug should be used between the connection of LED Shell light and power. And please confirm if the rated voltage and frequency is accordance with the power supply. Every light with an independent power switch is suggested, it will be convenient for you to turn ON or OFF every light. This LED Shell light selected input voltage and frequency as follow:

Voltage	AC100V~240V	Frequency	50/60Hz
---------	-------------	-----------	---------

If the power cable is damaged, please contact the area agents or ask professional to replace it; please use the same size cable during replacement.

Caution: When connecting the power, ground wire must be (yellow / green color wire) safety earthed, electrical installation must be in accordance with all relevant standards.

● Fixation and installation of lighting (instruction of clamp and safety cable)



Make sure installation position is steady before fix the light. 2 sets of M10 professional clamp should be used when the light is reverse hanging, and drive the clamp into the screw hole which in the bracket of the light. Make sure the light will not fall from the truss, use the safety cable go through the truss and bracket of the light as a supporting, to avoid the light to fall down. There is no entrance to the work area during mounting. Periodically check if the safety cable has fretted away or clamp is loosen. We will not take any responsibility which caused by the lighting fall of unsteady hanging.

Warning

1. The clamp is used for hanging only.
2. It's prohibited to move the light by handle the clamp, please move the light by handle.

Operation

●[DIP switch] control setup

1	2	3	4	5	6	7	8	9	10	Function specification
○	○	○	○	○	○	○	○	○	○	Auto
●	○	○	○	○	○	○	○	○	○	Red , Flash slowest
○	●	○	●	○	○	○	○	○	○	Green , Flash speed 1 degree
○	○	●	○	●	○	○	○	○	○	Blue , Flash speed 2 degree
●	●	●	●	●	●	●	●	○	○	R+G+B, no Flash , Full on
X	X	X	X	X	X	X	X	●	○	Sound activate
●	○	○	○	○	○	○	○	○	●	DMX control (address is 001)
○	●	○	○	○	○	○	○	○	●	DMX control (address is 002)
○	○	○	○	○	○	○	○	○	●	DMX Slave mode

- Note: 1、 X means random state ● means dip switch is "ON" ○ means dip switch is "OFF".
- 2、 When DIP 10 dial to ON, 1~9 is address code setting (8421 binary code setting format) , 1 is ON、 2~9 is OFF, address is 001.
 - 3、 When DIP10 dial to ON and others is OFF, it is DMX slave machine.
 - 4、 1 control red, 2 control green, 3 control blue; 4~8 control Flash.

Appendix

●Usage of the Signal Cable、 Connector

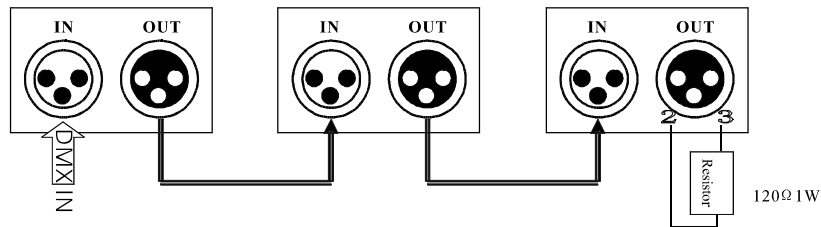
The connection between the output of master and input of slave, it's available to use the 3 pins XLR cable which provided by the manufacturer. Signal cable from the DMX output of the controller to the input of the first master light, and connect

to the DMX input of second slave light from the DMX output of the first master light, analogously, till connected all the slave lights, and insert the last connector to the output of the final light.

If you want to prolong the connection of signal cable, the connection of the pins between male connector and female connector should be: 1 to 1; 2 to 2; 3 to 3, or it will cause communication interruption. (Notice: the diameter of core of every cable should be 0.5mm at least, double core shelter cable should be used). The signal connecting must use the attached 3 pins XLR cable. Notice, all the internal lead wire of the 3 pins XLR cable should not touch to each other or connect to the connector.

The light is available to receive the DMX512 signal, connect the signal plug to the panel which marked with "IN", and connect it to the next light. then, connect to the "IN" of next light from the "OUT". The DMX signal terminator is recommended when the lighting signal is connecting. It will avoid to damage the signal which caused by the noise, DMX terminator is a XLR connector, connect with a 120Ω resistor between the pin 2 and pin 3 of the XLR connector, and connect it to the last OUTPUT socket of the final light.

See picture:



●DMX channel value form

DMX channel	DMX value	Function specification
1、 Color select	0~35	Full off
	36~71	Red
	72~107	Green
	108~143	R+G
	144~179	Blue
	180~215	R+B
	216~251	G+B
	252~255	R+G+B
2、 Flash	0	Full on
	1~255	From fast to slow
3、 Move speed	0~255	From fast to slow

Note: 1、 All the lights should be power ON if you want them flash in synchronous, and adjust CH2 , first in fast flash and in synchronous, and then can adjust to other speed.

Preface

This Manual includes the important information of installation and operation. Please install and operate the light according to the instructions strictly. And it must be power off when open the light or before repair.

- A: Please read the complete contents of this manual (please keep this manual attach with the light for any preview)
- B: In order to make sure the correct and safety installation、 operation and maintenance, well know and follow to the instructions of Manual is necessary.
- C: We will not take any responsibility to the light damage、 property loss or body injure which caused by the incorrect installation、 operation and maintenance.

NOTICE: The data which inside the Manual maybe changed due to the continuous improvement, and we'll not make another notice. We will keep the right to any specification update during improvement

Warning: it should be changed if the protection screen、 lens or UV screen got a visible damage, e.g.: scratch or chasm.

●Packing Content

- (accessories) (Selectable)
- 1: Power Cable (1PCS) a: Bracket
- 2: User's Manual (1PCS) b: Clamp
- 3: Maintenance Card (1PCS) c: Safety Cable

● Unpacking Instruction:

Please check if all the contents are completed after unpacking? then, check if the light is undamaged? Please you can keep the original package and return to the factory if it's damaged

●AC Power: Check if the voltage is accordance with the rated power.

●Safety Specifications: All the safety items of operation (includes installation) and before operating.

1. Unpacking the light case and take out all the accessories, and open the poly package, take out the light from the carton, and put it in a certain platform for operation.
2. This device for indoor use only, the protection grade is: IP20. the light must keep dry and avoid to use under the Moist、 Overheat or Dusty surroundings. And keep the light far away from the water or other liquid.
3. Installing of the light must keep a distance with any flammable objects by 5m at least. The distance between the light and the projected objects must be nolessthan 1m.
4. Please never install the light on the surface of the flammable objects.
5. The installation、 operation and maintenance must be managed by the qualified professional, and make sure to operate it under the instruction of the Manual.
6. Make sure the work environment temperature of the light maximum 40°C, and minimum -20°C
7. The temperature of the light surface will up to 85°C even under the normal cooling, so never touch it by hand.
8. The light was designed by electric shock protection type, and must connect to the power supply system which well earthed. Furthermore, the ground wire of the light must connect to the ground wire of the power supply system, ground wire interface of the light must well connect with the light body (or light must be well earthed)
9. Please check if the voltage is accordance with the rated power before installing.
10. Please never use the power cable which was damaged the insulation cover, meanwhile, never put the power cable on any other wire. Please pull out the power cable by handle