

The header features a light orange background with a repeating pattern of stylized, overlapping chevron-like shapes. In the center, the Yamaha logo (a three-petaled star) is positioned to the left of the word "YAMAHA" in a bold, sans-serif font. Below this, the word "THR" is written in a very large, bold, black font, and "Update Manual" is written below it in a slightly smaller, bold, black font.

YAMAHA THR Update Manual

This updater applies only to the THR10/THR5. It does not apply to any other THR model.

Be sure to perform the procedures only with the THR10/THR5.

Do NOT use the update on your THR10C, THR10X or THR5A!!!

Special Notices

- The software and this Update Manual are the exclusive copyrights of Yamaha Corporation.
- Copying of the software or reproduction of this Update Manual in whole or in part by any means is expressly forbidden without the written consent of the manufacturer.
- Yamaha makes no representations or warranties with regard to the use of the software and documentation and cannot be held responsible for the results of the use of this Update Manual and the software.
- For information about the latest information of THR Updater, check the web site below.
<http://download.yamaha.com/>
- The screen displays as illustrated in this Update Manual are for instructional purposes, and may appear somewhat different from the screens which appear on your computer.
- Copying of the commercially available musical data including but not limited to MIDI data and/or audio data is strictly prohibited except for your personal use.
- Click on the [blue-colored](#) text to jump to the related item in this manual.
- Windows is a registered trademark of Microsoft® Corporation in the United States and other countries.
- Apple, Mac and Macintosh are trademarks of Apple Inc., registered in the U.S. and other countries.
- Steinberg is a registered trademark of Steinberg Media Technologies GmbH.
- The company names and product names in this Update Manual are the trademarks or registered trademarks of their respective companies.
- Future upgrades of application and system software (e.g., firmware of the products) and any changes in specifications and functions will be announced at the following website.
[http:// download.yamaha.com/](http://download.yamaha.com/)

This Update Manual assumes that you are already familiar with basic Windows/Macintosh operations. If you are not, please refer to the owner's manual which came with your Windows/Mac OS software before using the THR Updater.

The screen illustrations in this manual are mainly taken from Windows (with the THR10 connected). Differences that exist in the Macintosh version are duly shown and explained.

Updating the THR

Before updating the THR, install the “Yamaha Steinberg USB Driver” onto the computer.

- * For details on installing the “Yamaha Steinberg USB Driver”, refer to the Owner’s Manual included with the THR10/THR5.

■ Updating the THR

1. Access the following website, and then download the “THR Updater” for your computer environment.

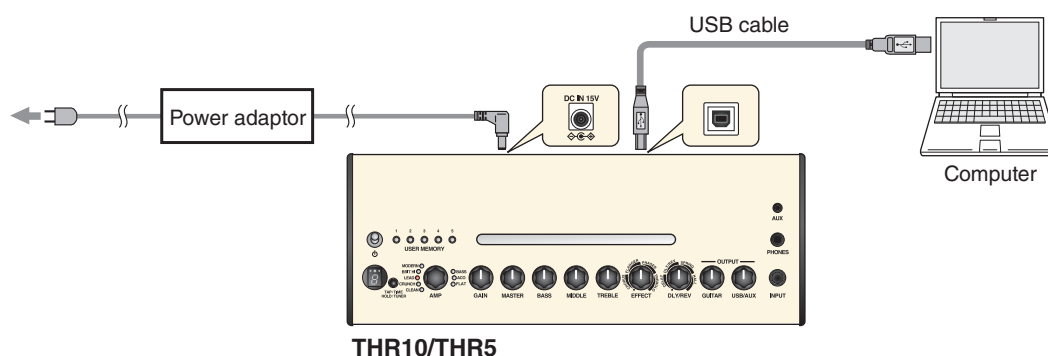
<http://download.yamaha.com/>



If the update failed

After checking that the USB cable is correctly connected, repeat the procedure starting from step 2.

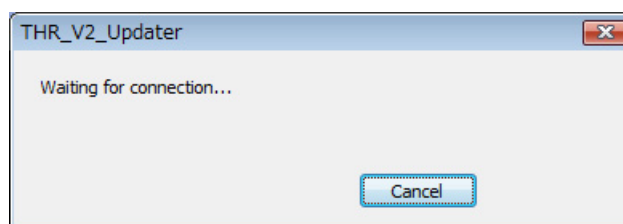
2. Observe the precautions described below, and then use the USB cable (included with the THR10/THR5) to connect the THR10/THR5 to the computer.



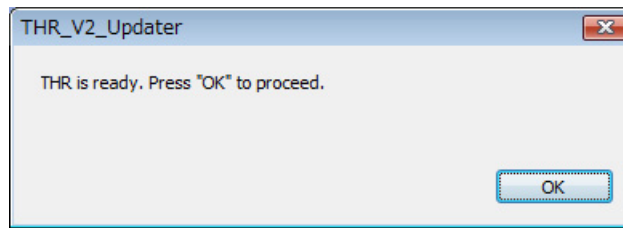
⚠ CAUTION

- Be sure to wake the computer from suspended/sleep/ standby mode before connecting a computer to the USB jack.
- Be sure to operate the THR10/THR5 with the power adaptor (Do not use battery power).
- Always quit all applications that are running on the computer before connecting or disconnecting the USB cable and set the volume output on the computer to its minimum level.
- When connecting or disconnecting the USB cable, be sure to set the VOLUME and the USB/AUX OUTPUT on the THR10/THR5 to their minimum levels.
- Wait at least 6 seconds between connecting or disconnecting the USB cable.

3. Start the “THR Updater” on the computer.

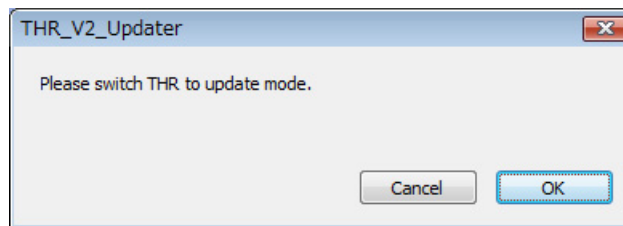


4. Turn on the THR10/THR5. The model (THR10 or THR5) that the computer will update is recognized, and then the following message appears.

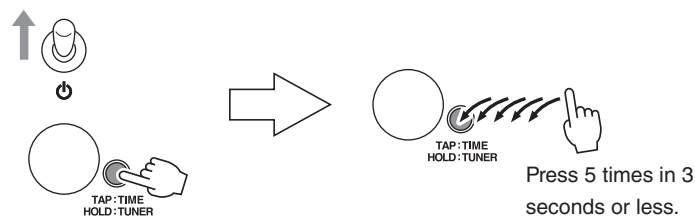


* **Models other than the THR10/THR5 cannot be updated.**

Click the [OK] button. The following message appears.



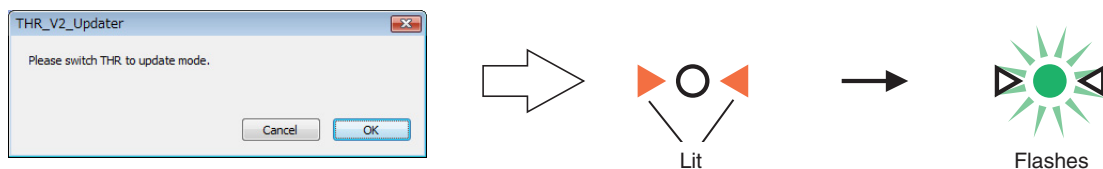
5. Turn off the THR10/THR5.
6. While holding down the TAP/TUNER button, turn on the THR10/THR5 again, and then press the TAP/TUNER button 5 times in 3 seconds or less.



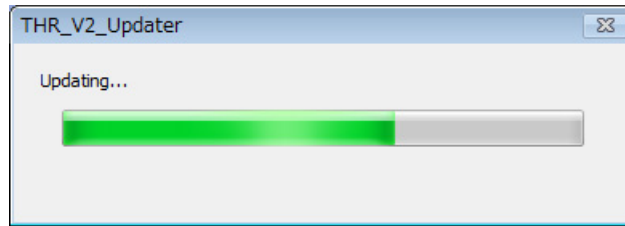
After a while, “U” appears in the LED display, and the THR enters update mode.



7. Click the [OK] button below the message on the computer screen.
- The progress status of the update appears in the THR10/THR5 display as shown below.



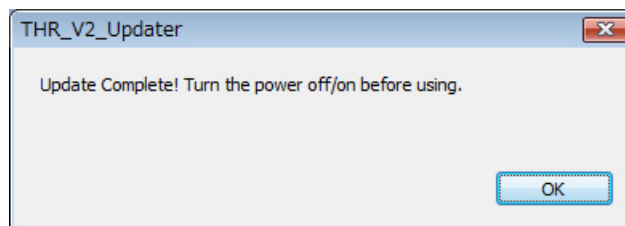
The progress status of the update also appears on the computer screen.



*** Never turn off the THR while it is in update mode.**

8. When the letters "E", "n" and "d" are sequentially repeated in the THR10/THR5 display, the update is finished.

When a message appears, indicating that the update is finished, click the [OK] button to close the THR Updater.



9. Turn off the THR10/THR5.
10. To check the update, hold down the TAP/TUNER button while turning on the THR10/THR5.
[E][n][d](2.0.0) appears in the display.

This completes the THR update.

© 2014 Yamaha Corporation, All rights reserved.